



**REGIONAL SPECIALISED METEOROLOGICAL CENTRE-TROPICAL CYCLONES, NEW DELHI  
TROPICAL WEATHER OUTLOOK**

---

**DEMS-RSMC TROPICAL CYCLONES NEW DELHI DATED 07.10.2021**

**TROPICAL WEATHER OUTLOOK FOR NORTH INDIAN OCEAN (THE BAY OF BENGAL OF BENGAL OF BENGAL AND ARABIAN SEA) VALID FOR NEXT 120 HOURS ISSUED AT 0600 UTC OF 07.10.2021 BASED ON 0300 UTC OF 07.10.2021.**

**BAY OF BENGAL:**

A LOW PRESSURE AREA IS VERY LIKELY TO FORM OVER NORTH ANDAMAN SEA AROUND 10TH OCTOBER. IT IS LIKELY TO BECOME MORE MARKED AND MOVE WEST-NORTHWESTWARDS TOWARDS SOUTH ODISHA - NORTH ANDHRA PRADESH COASTS DURING THE SUBSEQUENT 4-5 DAYS.

BROKEN LOW AND MEDIUM CLOUDS WITH EMBEDDED INTENSE TO VERY INTENSE CONVECTION LAY OVER ANDAMAN SEA. SCATTERED LOW AND MEDIUM CLOUDS WITH EMBEDDED MODERATE TO INTENSE CONVECTION LAY OVER EASTCENTRAL & SOUTH BAY OF BENGAL.

**PROBABILITY OF CYCLOGENESIS (FORMATION OF DEPRESSION) DURING NEXT 120 HRS:**

24 HOURS	24-48 HOURS	48-72 HOURS	72-96 HOURS	96-120 HOURS
NIL	NIL	NIL	NIL	NIL

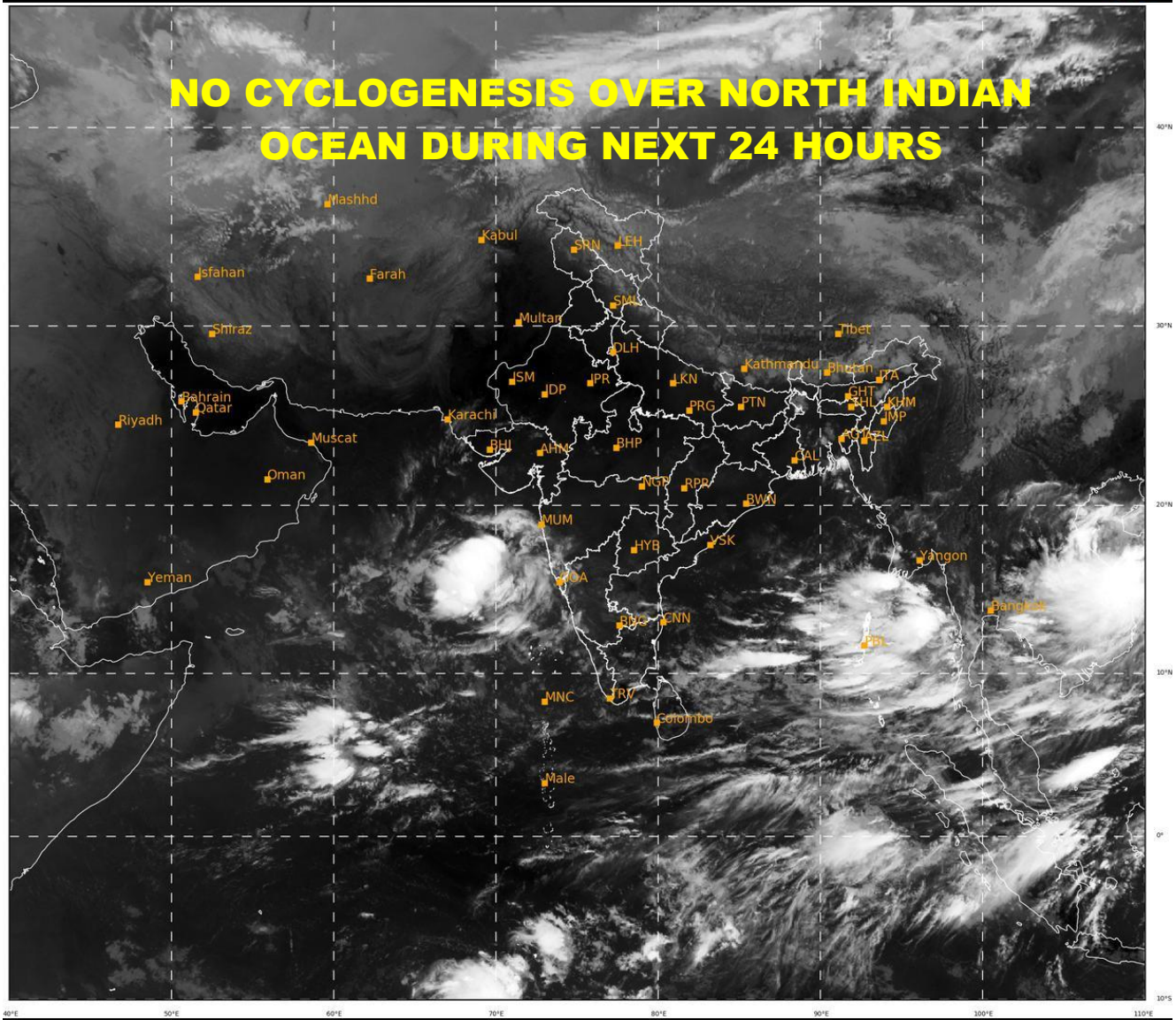
**ARABIAN SEA:**

SCATTERED TO BROKEN LOW AND MEDIUM CLOUDS WITH EMBEDDED INTENSE TO VERY INTENSE CONVECTION LAY OVER EASTCENTRAL ARABIAN SEA. SCATTERED LOW AND MEDIUM CLOUDS WITH EMBEDDED MODERATE TO INTENSE CONVECTION LAY OVER SOUTH ARABIAN SEA & OFF COAST MAHARASHTRA

**PROBABILITY OF CYCLOGENESIS (FORMATION OF DEPRESSION) DURING NEXT 120 HRS:**

24 HOURS	24-48 HOURS	48-72 HOURS	72-96 HOURS	96-120 HOURS
NIL	NIL	NIL	NIL	NIL

**REMARKS:** NIL



491

939

IMD, DELHI